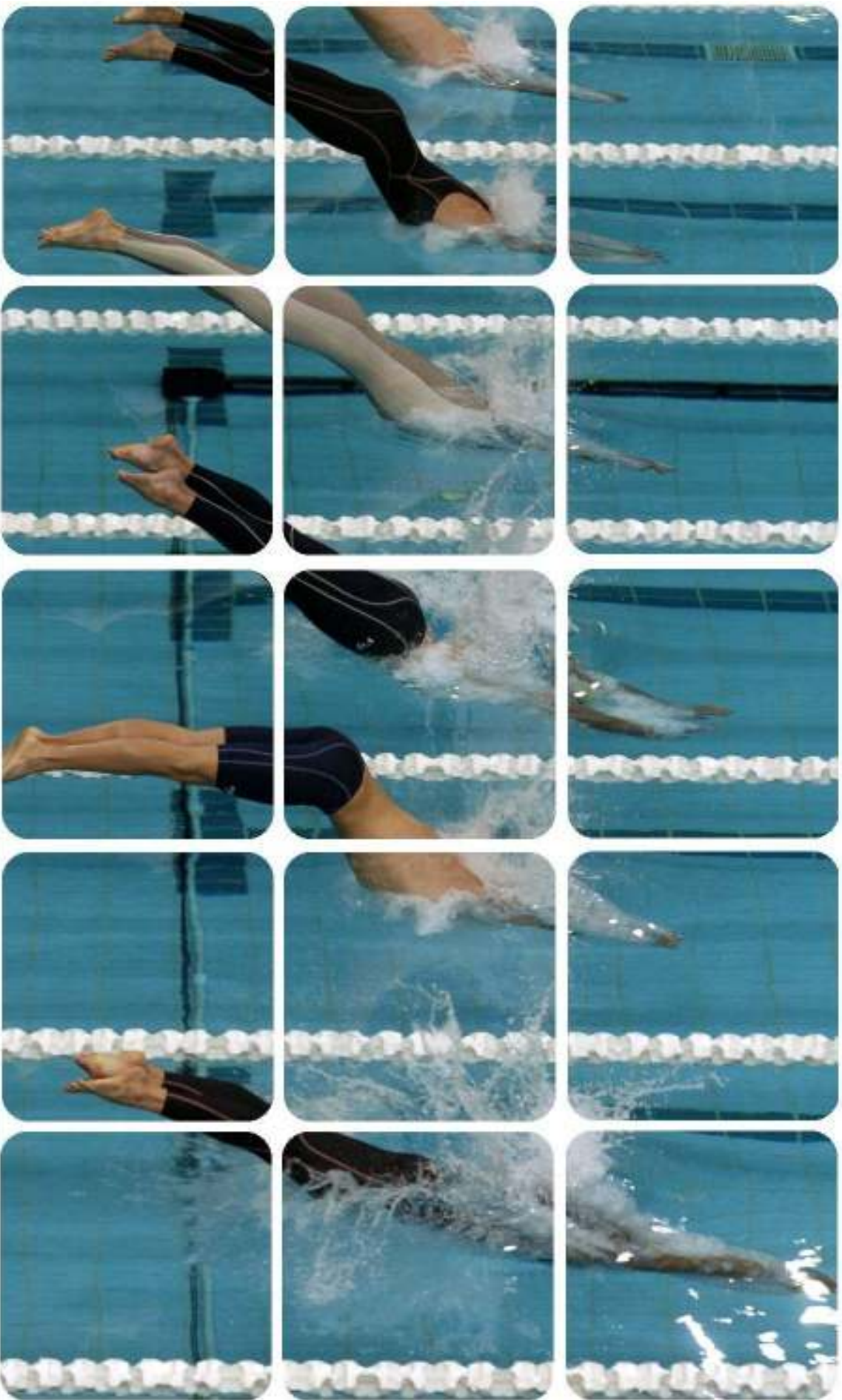


# Getting Started

*Collegeswimming.com's* Guide for  
Coaches & Media Relations Personnel



# *CollegeSwimming.com* is Ten!

When established a decade ago, CollegeSwimming.com was one of the very few sources of swimming news on the web. Now there's no shortage of swimming websites with news, opinion, and even live video coverage. Since then, we've also grown far beyond just a source of college swimming news and results.

This year we're especially excited because of several developments, including:

- Fully-integrated results and top times;
- A larger, and more professional staff;
- Features like Twitter and Blogs that allow you to publish straight to the site;
- Expanded news coverage; and
- much, much more.

With so many new tools and the rapid turnover of media-relations personnel, we've created this "how-to" guide for you and your staff. Our ability to strengthen college swimming depends on you. We hope this guide will enable you to take advantage of our resources.

If we can serve in any way, please let me know,

Greg Earhart  
gearhart@collegeswimming.com

## **INDEX**

Your Account .....	2
Adding News .....	3
Using Webnews .....	4
Uploading Meet Results & Top Times.....	5
Adding Meet Results and Top Times.....	5
Creating CL2 Files.....	6
Setting Up Live Meet Results.....	7
Updating School & Team Information.....	8
Twitter .....	8
Roster & Swimmer Profiles.....	9
Using Your Blog.....	10
Broadcasting on CollegeSwimming.tv.....	11
Team Recognition Programs & Awards .....	12
Polls / Rankings.....	12
National Swimmer-of-the-Week .....	13
Mid-Major All-American Team .....	13
Community Service All-American Team .....	13
College Swimming Foundation .....	14
Recruiting and RecruitProfile.com .....	16
Advertising .....	17
Site Integration and API's .....	17
Appendix.....	18
Official Team Names.....	18
Conference Affiliations .....	21
Staff Contact Information .....	24
E-Mail Submissions.....	24
News Staff Contacts.....	24
Program Coordinators .....	24

## Your Account

A CollegeSwimming.com account is a valuable tool for coaches and media relations personnel. With a user account, you will be able to:

- Post news articles
- Enter meet schedule
- Make blog entries
- Upload meet results
- Update contact information
- Add coach information
- Add facility information
- Edit top times
- Edit team information
- Edit swimmers' profiles
- View recruit profiles

To create an account click the "Sign Up" link on the front page. This will walk you through the steps necessary to set up an account. Registering with a coach or media relations account is a three step process.

1. User registers using valid college or university-assigned e-mail address;
2. User receives a confirmation e-mail with instructions on how to activate account;
3. CollegeSwimming.com staff manually approves the account (typically within 24 hours).

While somewhat cumbersome, this is done to prevent the abuse of your account or access to your team information.

Once you've logged in, you can take advantage of the several tools from the control panel (figure 2).

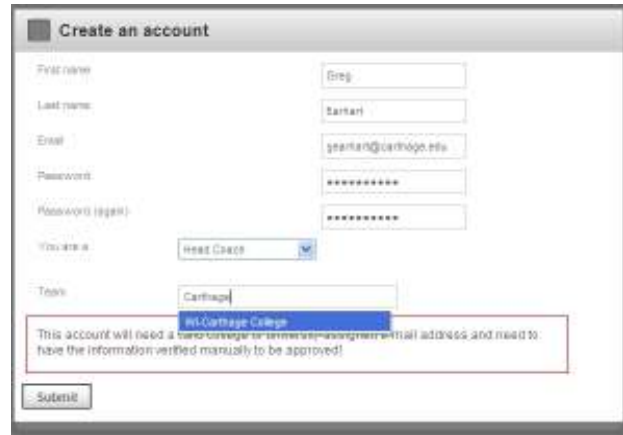


Figure 1-Create an account

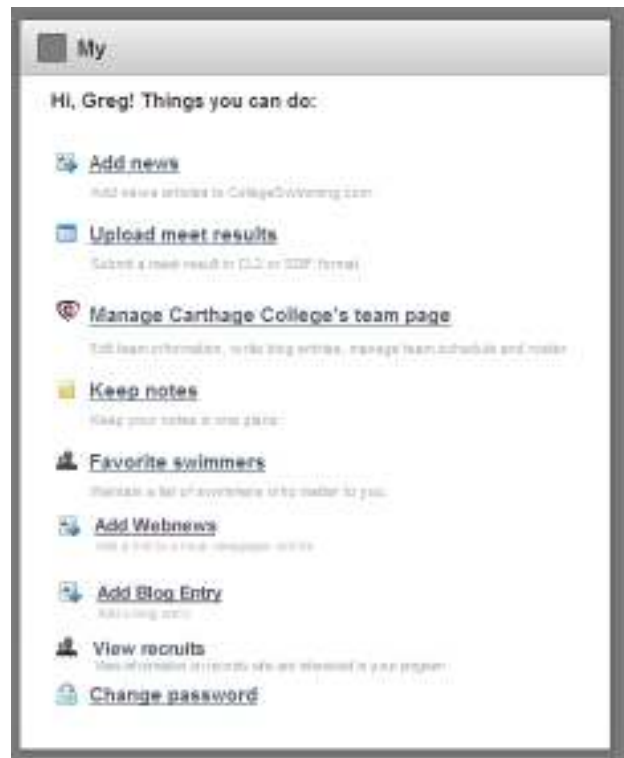


Figure 2-Control Panel



## Using Webnews

---

Every day users submit newspaper articles about their favorite team or swimmer. Oftentimes, these are excellent articles written by local or school newspapers. Unfortunately, they are also copyrighted. In the past, CollegeSwimming.com would frequently obtain permission to republish the article from the paper and run it as a normal news article.

The “Webnews” feature replaces this process. Webnews saves time, supports your local paper and enables you to connect readers with news about your team by linking directly to that article.

When using the Webnews feature, please consider the following:

- Keep the title short and specific.
- Use the date of publication (not necessarily today’s date);
- Avoid linking to articles on other swimming news-related websites. We like supporting our colleagues and hope you’ll support them as well.
- Make sure you tag your team so that the article appears on your team page.

## Uploading Meet Results & Top Times

### Adding Meet Results and Top Times

CollegeSwimming.com offers coaches and media personnel several ways to post meet results and update their top times.

You have three ways to post results.

- **Upload Result File Directly:** Click “Add Final Results” and upload a CL2, SD3, or ZIP-formatted result file. This immediately updates top times, and lets users look at splits, view swimmers’ profiles and more.
- **E-Mail Result File:** E-mail a CL2, SD3, or ZIP-formatted result file to [results@collegeswimming.com](mailto:results@collegeswimming.com). This allows all of the features of the Direct Upload, but may take a day or two for the CollegeSwimming.com staff to manually update the results.
- **Upload HTML Results:** Hy-Tek will create a

HTML file for web publication. This is handy for events with multiple sessions, but will not create feature-rich results or add times to the top times list. This option should be used for multiple-session meets which are not yet completed or as a last result. To do so, click “Add a Session.”

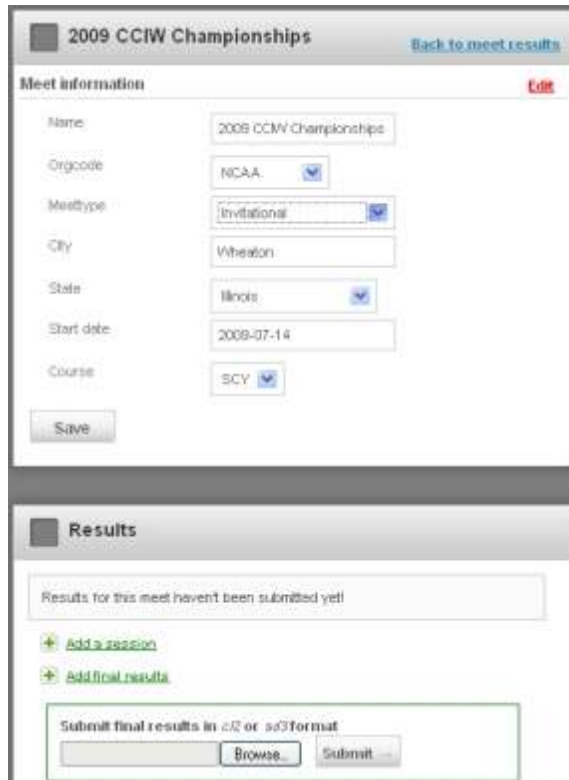


Figure 4 - Adding Meet Results

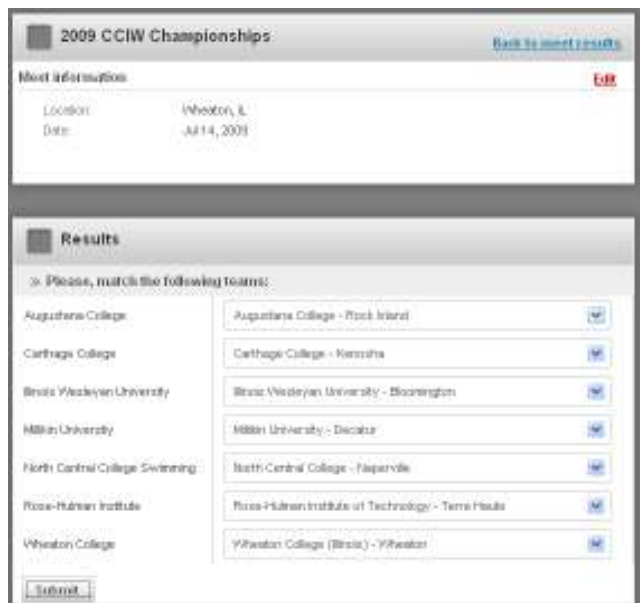


Figure 5 - Matching Teams

When adding results you may be asked to identify each team (Figure 5). Please ensure that you have selected the correct teams. This will ensure that top times are correctly assigned. If you are unsure of a team, check the list of Official Team Names at the end of this document.

## Creating CL2 Files

To create a CL2 file for upload into the meet results database do the following from Hy-Tek's Meet Manager:

- Once the meet has been completed, select "File" – "Export" – "Results for Team Manager or SWIMS or NCAA Database" (Figure 6)
- The "Export Results" dialogue box will appear (Figure 7). Make sure you have selected the appropriate selections and save the file to a location you will remember.
- This will create a .ZIP file which contains compressed versions of CL2 and SD3 files. You can unzip these files and upload the CL2 file directly the meet results page.

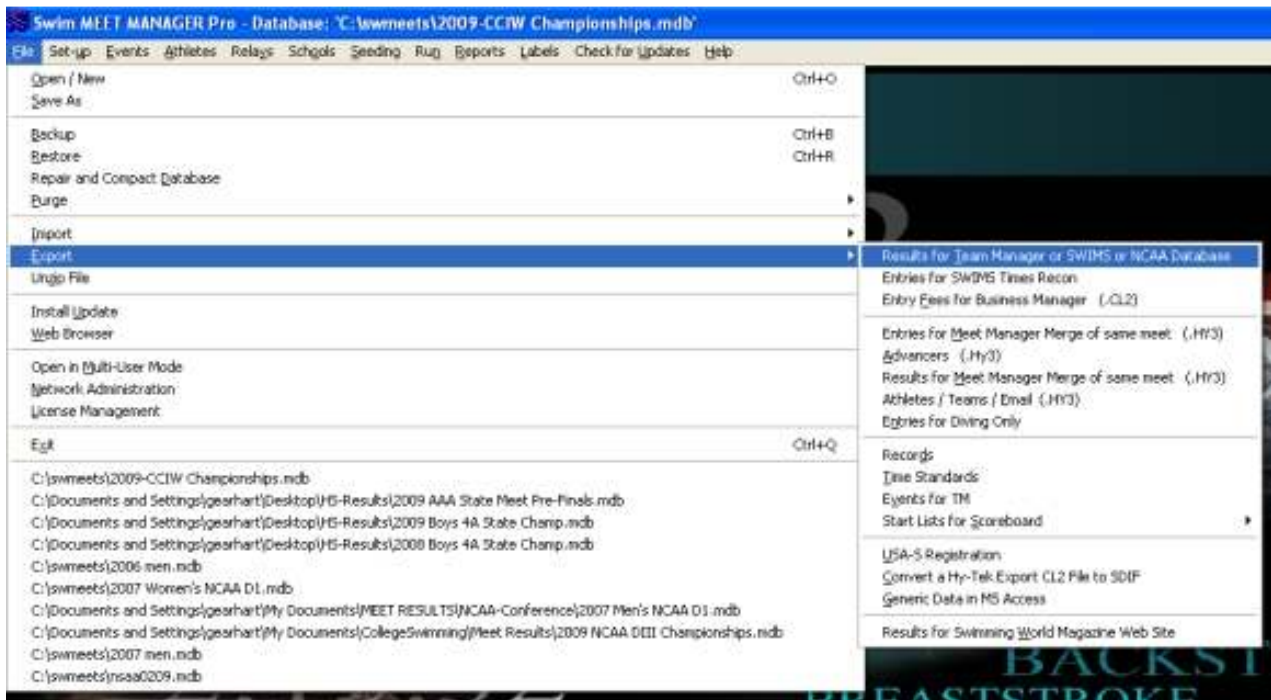


Figure 6 - Export Meet Results

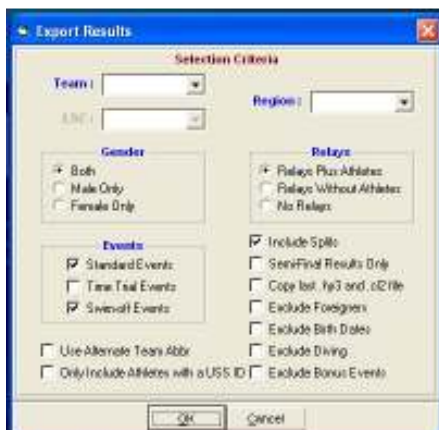


Figure 7 - Export Options

## Setting Up Live Meet Results

CollegeSwimming.com makes its server available to teams that wish to post live meet results. This is a free service available and gives fans the fastest access to meet results. Note: This is different than uploading results to our meet and top times database. You will still need to upload a CL2 file following the meet.

To set up live results:

1. At least one week prior to your meet, contact Greg Earhart [gearhart@collegeswimming.com](mailto:gearhart@collegeswimming.com) and request that a results folder be set up for your meet.
2. Once your folder is set up you will be provided with the folder name and password.
3. Open Hy-Tek's Meet Manager Pro. Go to the "Run" screen (Figure 5)
4. Click on "Web" to bring up the settings for your results page.
5. Use the settings listed below.
  - a. Site address is: [ftp.collegeswimming.us](http://ftp.collegeswimming.us)
  - b. Username is: u36383867-results
  - c. Password will be e-mailed by Greg
  - d. Working directory will be: schoolname/. You will need to include the slash after your directory name.
6. Click "Test Website Connection". This opens your connection to your website.
7. Click on the "Settings" tab to establish the settings for your site (Figure 9).
8. Click "Upload Event Schedule". This will place your event schedule on the site.
9. Then you can upload psych sheets.
10. Then, once the meet is running you can hit "F11" to send each heat's results to the web or "F12" to send the entire event's results to the web.
11. Your results will be available at <http://www.collegeswimming.us/results/schoolname/>



Figure 8 - Connecting to CollegeSwimming.com



Figure 9 - Set up results' appearance

Note: This is different than uploading results to our meet and top times database. You will still need to upload a CL2 file following the meet.

## Updating School & Team Information

To update your school, coaching, facility and team information, log into your account. Click on the “Manage team page” link from the control panel. This will take you to your team’s page. If you are logged and see the word “Edit” in red letters next to your team name you can click on and edit each of these modules:

- Team Information
  - Division, Conference, Enrollment
  - Historical Performance
  - Facility Information
- Coaches
  - Head coach, assistants, others
  - Contact Information
- Roster
  -
- Schedules/Results



Figure 10 - Team Page

Other modules such as news, top times, and recruiting are editable via different methods.

### Twitter

Adding a Twitter account to your team information will enable your “Tweets” to appear on your team page. CollegeSwimming.com reserves the right to select which “Tweets” will appear on the front page and routinely cycles through different accounts.



To increase the likelihood of your Tweets appearing on the front page:

- Keep posts swimming-specific and relevant to our audience;
- Avoid posting excessive Tweets;
- Avoid re-tweets from other users’ accounts.

## Roster & Swimmer Profiles

With your user account you can build a team roster and edit your swimmers' profiles. Team rosters are built from:

- **imported meet results** – as soon as a set of results have been imported, swimmers will be added to your roster, or
- **manually** – a coach or SID may enter each swimmer manually.

With your account you will be able to edit each swimmers' profile (figure 11). You will be able to add photos, chronicle their accomplishments update their top times, and more. This document won't cover every aspect of rosters and swimmer profiles, but some notes:

- **Photos:** Prior to uploading a photo, please resize the photo to no larger than 20k and name it "School-LastName.jpg". This will help your photos load faster and make it easier to find for future use.
- **Adding Swimmers:** When adding a new swimmer to your roster, the name will be checked against

our database. If there is a match, you will be asked to select one of the current swimmers or add a new swimmer (figure 12)

- **Recruits:** Once a recruit has decided on what school to attend, their name will appear under your "Recruits" link. Once completed, you will

be able to edit many, but not all, of the swimmers' biographical items.

- **Duplicate Swimmers:** Occasionally a swimmer will have a duplicate entry on the roster. Bob Johnson-Cutler might be listed as, "Johnson-Cutler, Robert", "Johnson-Cutler, Bobby A", "Johnson, Rob". If you find this is the case, click the link "mark as duplicate" next to that swimmers' name, and select the correct swimmer from the list. (Figure 12)



Figure 11 - Swimmer Profile



Figure 12-Entering a New Swimmer

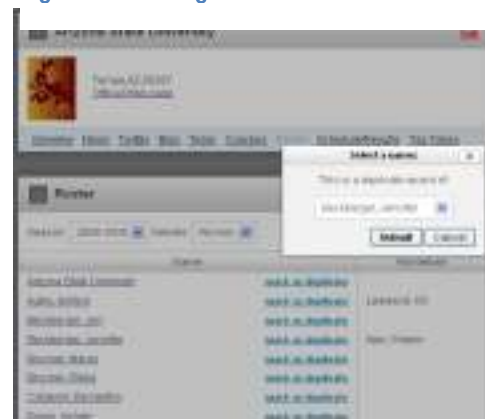


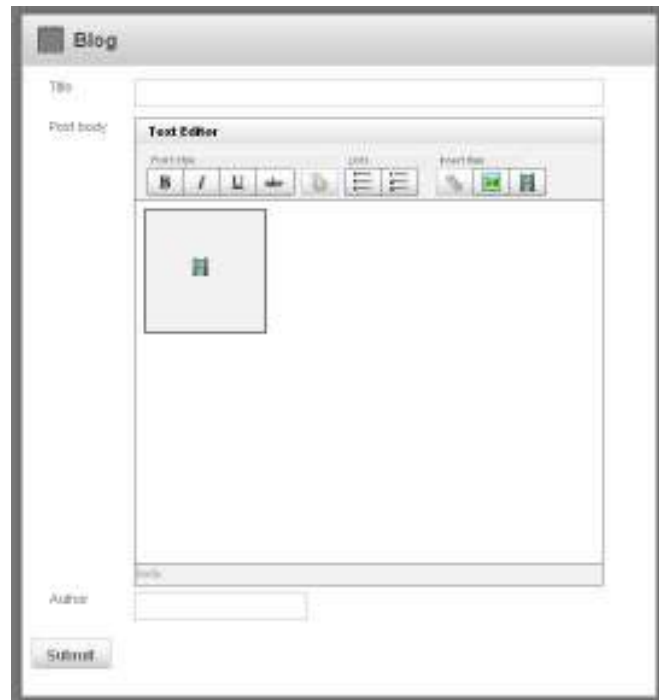
Figure 13 - Duplicate Swimmers

## Using Your Blog

With a team account you have the ability to publish to your team blog. A blog enables you to communicate immediately to your fans, recruits, alumnae and more. Unlike a news article, blogs enable you to offer a bit more unfiltered look on your team. Want to announce your upcoming golf outing? You can do it here? Care to express your opinion? The blog is the place. With a blog you can add photos, video and more.

To add a blog entry, simply click “Add Blog Entry” from your team page.

You may obtain a customized web address (e.g. [www.nuswimming.com](http://www.nuswimming.com)) to point to your blog for just \$15.00 annually.



## **Broadcasting on CollegeSwimming.tv**

---

CollegeSwimming.tv enables you to broadcast your meets live. All you need is a camera, laptop and internet connection. With multiple cameras, preset templates, and additional personnel, you can produce a high-quality broadcast.

To set up a broadcast, you will need to contact our partners at Stretch Internet (877-778-7382, ext. 2 or by e-mail at [stream@stretchinternet.com](mailto:stream@stretchinternet.com)) no less than one week in advance of your first event to schedule a time to configure and test your equipment and the streaming software. Their staff will also be available during your live event to provide logistical and technical support. To stream live video, you will need the following:

- A. A dedicated high-speed Internet connection with at least 500 Kbps upload speed (and preferably 700 Kbps or more). You can measure your upload connection by connecting to the network you'll be using and visiting <http://www.speedtest.net> (make sure to look at the upload speed, NOT the download speed). You can generally use wired OR wireless connections. In some cases, you can even use the wireless Internet cards available through various cellular providers. Please note that it might be necessary for us to work with campus network administrators if the initial configuration tests identify transmission problems. We can also provide more technical information on our streaming protocol if requested by your network administrators.
- B. A digital video camera, with a firewire output (if your camera does NOT have a firewire output, we can help you obtain converter units for approximately \$250). You might even be able to "piggyback" on the camera used for coaching purposes.
- C. A computer that meets the following requirements:
  - PC Requirements:
    - i. Windows® Vista or Windows® XP (32-bit version),
    - ii. Intel® Pentium® 4 processor at 2.3 GHz or higher with 1 GB of RAM or more (Pentium 4 3GHz recommended)
    - iii. Microsoft® DirectX 9.0c
    - iv. Apple QuickTime 6.5.2 or better (7.5 recommended)
    - v. 32 MB AGP or PCI-Express graphics card with 3D acceleration (GeForce® or Radeon® class card recommended)
    - vi. Firewire port (also called IEEE 1394)
  - Mac requirements:
    - i. Mac OS X Tiger 10.4.10 or greater (Mac OS X 10.5 recommended)
    - ii. Intel® or PowerPC G4 processor (Core Duo or G5 recommended). At least a 1.67 GHz CPU and 2 GB of RAM is highly suggested
    - iii. Firewire port (also called IEEE 1394)
- D. Streaming software, which can be downloaded off the Internet (we provide the license). We will provide the download link after our initial contact with each school.
- E. An audio input jack on your computer or camera, and optional audio mixer and broadcasting headsets

## Team Recognition Programs & Awards

---

### Polls / Rankings

Several organizations, including CollegeSwimming.com produce polls throughout the season. This will give you an idea of the different rankings system:

- **CSCAA Division I Poll** – The CSCAA poll is released eight times throughout the college swimming season. Pollsters representing eight conferences along with two at-large voters have the task of ranking the top dual meet teams in the nation throughout the season.
  - **Posting Dates (2008-09):** October 16, October 30, November 13, December 11, January 15, January 29, February 12, and February 26
- **Swim-Rankings.com Division I Rankings** – Produces rankings based on simulated dual-meets several times throughout the year.
  - **Posting Dates:** Unknown at this time
- **CollegeSwimming.com Mid-Major Division I Ranking** – The CollegeSwimming Mid-Major Division I ranking is based on each team's best dual meet lineup as judged and submitted by participating teams. Teams download an entry sheet and submit it to Randy Horner for submission.
  - **Mid-Major Designation:** Institutions are eligible to participate in the Mid-Major rankings if they:
    - Are not a member of the ten “Major Conferences” as listed in the appendix. These are conferences with automatic BCS bowl bids; or
    - They award fewer than seven women’s or five men’s scholarships
  - **Entry & Posting Dates:**
    - Pre-Invite: November 9 for posting November 12
    - Post-Invite: December 14 for posting December 17
    - Pre-Conference: February 1 for posting February 4
    - Post-Conference: March 1 for posting March 4
- **CollegeSwimming.com Division II Ranking** – The CollegeSwimming Division II ranking is based on each team's best dual meet lineup as judged and submitted by participating teams. Teams download an entry sheet online and submit it to Brad Flood for submission.
  - **Entry & Posting Dates:**
    - Pre-Invite: November 9 for posting November 12
    - Post-Invite: December 14 for posting December 17
    - Pre-Conference: February 1 for posting February 4
    - Post-Conference: March 1 for posting March 4
- **CollegeSwimming.com Division III Poll** – The CollegeSwimming Division III poll is voted on by Division III CSCAA-member coaches.
  - **Entry & Posting Dates:**
    - Pre-Invite: November 9 for posting November 12
    - Post-Invite: December 14 for posting December 17
    - Pre-Conference: February 1 for posting February 4

## **National Swimmer-of-the-Week**

With the support of Counsilman-Hunsaker, CollegeSwimming.com produces the National Collegiate Swimmer-of-the-Week Award. This award recognizes the top men's and women's performances in each of the three NCAA Divisions.



Nominations should be submitted to [ncsw@collegeswimming.com](mailto:ncsw@collegeswimming.com) by 1:00 pm each Monday. Nominations should include:

- Swimmers' name and year in school
- Hometown
- Individual accomplishments including event places, records broken, time standards achieved, and any other pertinent information
- Opponents and team scores

Athletes recognized as National Collegiate Swimmers-of-the-Week and their coaches will be provided a certificate recognizing their selection.

## **Mid-Major All-American Team**

CollegeSwimming.com recognizes swimmers from participating Mid-Major teams through its All-American program. Individual Mid-Major swimmers who qualify for the NCAA Division I are designated as Mid-Major All-Americans. Mid-Major swimmers who achieve an individual NCAA 'B' standard are designated as Mid-Major Honorable Mention All-Americans.

At present, there are no certificates printed for Mid-Major All-Americans.

## **Community Service All-American Team**

This program is currently in development.

---

## **College Swimming Foundation**

---

CollegeSwimming.com works closely with The College Swimming Foundation, a registered 403© to simplify the fund raising process for college swimming programs and their fans. The College Swimming Foundation serves as a central “marketplace” for teams to send donors and for donors to find their favorite team.

### **The Model**

College swimming teams traditionally seek donations from two sources – parents and alumni. While valuable, the audience is inherently limited. The Campaign of President Barack Obama, however, offered a new model of fund raising. In addition to targeting ‘fat cats’, the Obama campaign, made it easier for larger numbers of small donors to participate in the process. When he was done, Obama had amassed more campaign donations than all previous Presidential campaigns combined.

### **The Process**

- Boosters visit the College Swimming Foundation website, find their team, select an amount to donate, and pay for their donation via a secure online checkout.
- A confirmation is sent to the donor and recipient program's head coach(es).
- Each quarter, recipient teams will receive a check totaling all current donations.

### **Donor Benefits**

- Lets supporters make a contribution wherever and whenever they like. No need to wait to be asked or worry that their donation will be too small.
- Donations will be tax-deductible\*.
- Allows supporters to support multiple institutions.

### **Team Benefits**

- Allows teams to reach a wider range of donors. Yes, parents and alumnae can contribute, but local businesses, fans, grandparents, and local businesses can as well.
- Enables institutions to process credit cards with the assurance that donations will go towards their team, not a central athletic or university account.
- Eliminates or eases the need to prepare mailings. Coaches can simply place a link on their newsletter, website, or personal correspondence.
- Provides a passive method of collecting gifts for those programs prohibited from soliciting donations. Donations received through the CollegeSwimming Foundation would not disrupt broader institutional fundraising campaigns.

\* Pending approval from the IRS.

## College Swimming Foundation Frequently Asked Questions

- What do we need to do to participate?
  - Nothing. All collegiate programs are automatically included in the website's menu of teams.
- Can we opt out of participating?
  - Yes – but why would you want to?
- What if our institution doesn't allow teams to solicit donations?
  - That's fine because unless you direct donors to the website, you're not. When a check arrives from the Foundation it is provided as an unsolicited contribution.
- Are donations tax-deductible?
  - Not yet, but they will be. Yes. The College Swimming Foundation is incorporated as a non-profit organization. It has applied for and waiting to receive tax-exempt status from the Internal Revenue Service. Once this status has been approved (anticipated, late Summer 2009), your donations will be 100% deductible.
- My school offers perks (points towards preferential seating, special events, etc) to donors. Will donors still be able to receive credit?
  - At this time, no. Eventually, we may be able to link such donors to individual athletic departments, but right now it's a bit too complex to manage.
- How can I ensure that my contributions will make it to the school?
  - Once your donation has been processed an e-mail will be sent to the head coach(es) of your program. The Foundation will also report transactions to the CSCAA to ensure that every donation makes it to the intended program.
- What if I want to designate my donation for a particular program (men's or women's team)?
  - When making your donation, there is an option of designating your donation for a particular use.
- What if I wish to remain anonymous?
  - Anonymous donations are welcome. Recipients will not be provided with your name or contact information.
- Is my credit card/ personal information safe?
  - Yes. All transactions are processed electronically via PayPal. The process utilizes the latest in encryption technology.
- Do you offer refunds?
  - No. Unless designated for a specific purpose (men's team, women's team, endowment, etc), all donations are considered unrestricted. If you would like to receive a refund on your donation, you will need to contact the appropriate coach of the recipient institution.

# Recruiting and RecruitProfile.com

CollegeSwimming.com has partnered with recruitingprofile.com to provide coaches with unprecedented access to prospective college swimmers.

All users will be able to access basic information on recruits. This includes:

- Name, times, hometown and team affiliations

With a paid subscription to recruitingprofile.com, coaches can use their CollegeSwimming.com account to:

- Look up contact, physical, academic, and personal information
- Get fun conversation starters and learn recruits' top decision-making factors
- Learn how a recruit might fit into your team dynamic through a sixteen-point psychological profile
- Receive a notice when a recruit tags your school as one they are considering.

Pricing information is available directly from recruitingprofile.com

**Greg Recruit**

Profile Top Times

[Change photo](#)

**Basic Information** [Edit](#)

Name: Greg Recruit  
Teams I belong to: [Ralston High School](#)  
Hometown: Ralston, NE

**Enrollment Information** [Edit](#)

High school graduation: 2010  
College enrollment year: 2010  
Teams I am considering: [Minnesota, Twin Cities, University of Indiana University-Bloomington, Carthage College](#)

**Contact Information** [Edit](#)

Address: 8201 Robin Hill Drive  
Home phone: 262-555-1212  
Mobile phone: 262-555-1213

**Academic Information** [Edit](#)

ACT: 26  
GPA: 3.75  
Interested Major: History

**Decision Factors** [Edit](#)

1 - most important 5 - least important

Academic:  1  2  3  4  5  
Coaching:  1  2  3  4  5  
Facility:  1  2  3  4  5  
Location:  1  2  3  4  5  
Scholarship/Cost:  1  2  3  4  5  
Team quality:  1  2  3  4  5  
Signing period:  1  2  3  4  5  
Other: Sunny Location

**Family** [Edit](#)

Father's name: Charles  
Father's occupation: Small Business Owner  
Mother's name: Carol  
Mother's occupation: Medical Technologist  
Siblings: Tom (10)

**Fun** [Edit](#)

Favorite movie: Shawshank Redemption  
Five words that describe you: Competitive, Nice, Fast, Smart, Humble  
If I was an animal: Cheekle  
Proudest moment: Making State  
Pump-up song: Lose Yourself  
What's on your iPod: Ivan Marovic  
Who do you admire: Ivan Marovic

**Additional Information** [Edit](#)

Height: 6' 2" - 188.0cm  
Weight: 160 lbs - 72.7 kg  
Shoe size: 12  
Additional information about me: With this space, I can tell a little more about myself or ask potential questions of coaches who look at my profile.

## Advertising

---

Working with Sportgenic, you can now advertise on CollegeSwimming.com. All you need is an advertisement and a credit card. At present, CollegeSwimming.com offers one a single 300 x 250 banner advertisement for sale. In the coming months, however, advertisers will be able to:

- Select what part of the site they wish to advertise on (top times, polls, etc)
- Make use of different size banners (300x250, 728x90)
- Utilize Video
- Advertise on coaches' podcasts
- Sponsor events

Banner advertising is sold on a CPM basis. CPM stands for Cost per Thousand ad views using the Latin word mille in the acronym. CPM is one of the most commonly used benchmarks in the advertising industry and is not only used online, but in radio, TV and other forms of advertising. Advertising rates vary based on site traffic and advertiser demand.

To advertise, visit <http://collegeswimming.torque.sportgenic.com>

## Site Integration and API's

---

You can integrate CollegeSwimming.com onto your website. Whether news, results, top times or more, we are developing several features that enable websites to receive content from CollegeSwimming.com. If your website is interested in doing so, please contact Greg Earhart.

# Appendix

## Official Team Names

### Division I

Akron, University of.....Akron, OH  
 Alabama, University of.....Tuscaloosa, AL  
 American University.....Washington, DC  
 Arizona State University.....Tempe, AZ  
 Arizona, University of.....Tucson, AZ  
 Arkansas-Fayetteville, University of.....Fayetteville, AR  
 Arkansas-Little Rock, University of.....Little Rock, AR  
 Auburn University.....Auburn, AL  
 Ball State University.....Muncie, IN  
 Binghamton University.....Binghamton, NY  
 Boise State University.....Boise, ID  
 Boston College.....Chestnut Hill, MA  
 Boston University.....Boston, MA  
 Bowling Green State University.....Bowling Green, OH  
 Brigham Young University.....Provo, UT  
 Brown University.....Providence, RI  
 Bucknell University.....Lewisburg, PA  
 Buffalo, University at.....Buffalo, NY  
 Butler University.....Indianapolis, IN  
 California Polytechnic State Univ...San Luis Obispo, CA  
 California State University, Bakersfield..Bakersfield, CA  
 California State University, Fresno.....Fresno, CA  
 California State University, Northridge...Northridge, CA  
 California-Berkeley, University of.....Berkeley, CA  
 California-Davis, University of.....Davis, CA  
 California-Irvine, University of.....Irvine, CA  
 California-Los Angeles, University of (UCLA)  
 .....Los Angeles, CA  
 California-Santa Barbara, University of  
 .....Santa Barbara, CA  
 Campbell University.....Buies Creek, NC  
 Canisius College.....Buffalo, NY  
 Centenary College.....Shreveport, LA  
 Central Connecticut State University.....New Britain, CT  
 Charleston (South Carolina), College of.....Charleston, SC  
 Cincinnati, University of.....Cincinnati, OH  
 Clemson University.....Clemson, SC  
 Cleveland State University.....Cleveland, OH  
 Colgate University.....Hamilton, NY  
 Colorado State University.....Fort Collins, CO  
 Columbia University.....New York, NY  
 Connecticut, University of.....Storrs, CT  
 Cornell University.....Ithaca, NY  
 Dartmouth College.....Hanover, NH  
 Davidson College.....Davidson, NC  
 Delaware, University of.....Newark, DE  
 Denver, University of.....Denver, CO  
 Drexel University.....Philadelphia, PA  
 Duke University.....Durham, NC  
 Duquesne University.....Pittsburgh, PA  
 East Carolina University.....Greenville, NC  
 Eastern Illinois University.....Charleston, IL  
 Eastern Michigan University.....Ypsilanti, MI  
 Evansville, University of.....Evansville, IN  
 Fairfield University.....Fairfield, CT  
 Fairleigh Dickinson University.....Teaneck, NJ  
 Florida A&M University.....Tallahassee, FL  
 Florida Atlantic University.....Boca Raton, FL  
 Florida Gulf Coast University.....Fort Myers, FL  
 Florida International University.....Miami, FL  
 Florida State University.....Tallahassee, FL  
 Florida, University of.....Gainesville, FL  
 Fordham University.....Bronx, NY  
 Fresno State.....Fresno, CA  
 Gardner-Webb University.....Boiling Springs, NC  
 George Mason University.....Fairfax, VA  
 George Washington University.....Washington, DC  
 Georgetown University.....Washington, DC

Georgia Institute of Technology.....Atlanta, GA  
 Georgia Southern University.....Statesboro, GA  
 Georgia, University of.....Athens, GA  
 Harvard University.....Boston, MA  
 Hawaii, Manoa, University of.....Honolulu, HI  
 Holy Cross, College of the.....Worcester, MA  
 Houston, University of.....Houston, TX  
 Howard University.....Washington, DC  
 Idaho, University of.....Moscow, ID  
 Illinois at Chicago, University of.....Chicago, IL  
 Illinois State University.....Normal, IL  
 Illinois-Champaign, University of.....Champaign, IL  
 Indiana University-Bloomington.....Bloomington, IN  
 Indiana Univ-Purdue Univ at Indianapolis  
 .....Indianapolis, IN  
 Iona College.....New Rochelle, NY  
 Iowa State University.....Ames, IA  
 Iowa, University of.....Iowa City, IA  
 James Madison University.....Harrisonburg, VA  
 Kansas, University of.....Lawrence, KS  
 Kentucky, University of.....Lexington, KY  
 La Salle University.....Philadelphia, PA  
 Lafayette College.....Easton, PA  
 Lehigh University.....Bethlehem, PA  
 Louisiana State University.....Baton Rouge, LA  
 Louisville, University of.....Louisville, KY  
 Loyola College (Maryland).....Baltimore, MD  
 Loyola Marymount University.....Los Angeles, CA  
 Maine, University of.....Orono, ME  
 Manhattan College.....Riverdale, NY  
 Marist College.....Poughkeepsie, NY  
 Marshall University.....Huntington, WV  
 Maryland, College Park, University of.....College Park, MD  
 Maryland-Baltimore County, University of.....Baltimore, MD  
 Massachusetts (Amherst), University of.....Amherst, MA  
 Miami (Florida), University of.....Coral Gables, FL  
 Miami University (Ohio).....Oxford, OH  
 Michigan State University.....East Lansing, MI  
 Michigan, University of.....Ann Arbor, MI  
 Minnesota, Twin Cities, University of.....Minneapolis, MN  
 Missouri State University.....Springfield, MO  
 Missouri, Columbia, University of.....Columbia, MO  
 Mount Saint Mary's University.....Emmitsburg, MD  
 Nebraska, Lincoln, University of.....Lincoln, NE  
 Nevada, Las Vegas, University of.....Las Vegas, NV  
 Nevada, University of.....Reno, NV  
 New Hampshire, University of.....Durham, NH  
 New Jersey Institute of Technology.....Newark, NJ  
 New Mexico State University.....Las Cruces, NM  
 New Mexico, University of.....Albuquerque, NM  
 New Orleans, University of.....New Orleans, LA  
 Niagara University.....Niagara University, NY  
 North Carolina A&T State University.....Greensboro, NC  
 North Carolina State University.....Raleigh, NC  
 North Carolina, Chapel Hill, Univ of.....Chapel Hill, NC  
 North Carolina, Wilmington, Univ of.....Wilmington, NC  
 North Dakota, University of.....Grand Forks, ND  
 North Florida, University of.....Jacksonville, FL  
 North Texas, University of.....Denton, TX  
 Northeastern Illinois University.....Chicago, IL  
 Northeastern University.....Boston, MA  
 Northern Arizona University.....Flagstaff, AZ  
 Northern Colorado, University of.....Greeley, CO  
 Northern Iowa, University of.....Cedar Falls, IA  
 Northwestern University.....Evanston, IL  
 Notre Dame, University of.....Notre Dame, IN  
 Oakland University.....Rochester, MI  
 Ohio State University.....Columbus, OH  
 Ohio University.....Athens, OH  
 Old Dominion University.....Norfolk, VA  
 Oregon State University.....Corvallis, OR

Pacific (California), University of.....Stockton, CA  
 Pennsylvania State University.....University Park, PA  
 Pennsylvania, University of.....Philadelphia, PA  
 Pepperdine University.....Malibu, CA  
 Pittsburgh, University of.....Pittsburgh, PA  
 Princeton University.....Princeton, NJ  
 Providence College.....Providence, RI  
 Puerto Rico, University of.....Rio Piedras, PR  
 Puerto Rico-Mayaguez, University of.....Mayaguez, PR  
 Purdue University.....West Lafayette, IN  
 Radford University.....Radford, VA  
 Rhode Island, University of.....Kingston, RI  
 Rice University.....Houston, TX  
 Richmond, University of.....Richmond, VA  
 Rider University.....Lawrenceville, NJ  
 Rutgers, State Univ of New Jersey..New Brunswick, NJ  
 Sacred Heart University.....Fairfield, CT  
 Saint Bonaventure University.....St. Bonaventure, NY  
 Saint Francis College (NY).....Brooklyn Heights, NY  
 Saint Francis University (PA).....Loretto, PA  
 Saint Louis University.....St. Louis, MO  
 Saint Peters College.....Jersey City, NJ  
 San Diego State University.....San Diego, CA  
 San Diego, University of.....San Diego, CA  
 San Jose State University.....San Jose, CA  
 Seton Hall University.....South Orange, NJ  
 Siena College.....Loudonville, NY  
 South Carolina-Columbia, University of.....Columbia, SC  
 South Dakota State University.....Brookings, SD  
 Southern California-University of.....Los Angeles, CA  
 Southern Illinois University.....Carbondale, IL  
 Southern Methodist University.....Dallas, TX  
 Stanford University.....Stanford, CA  
 Stony Brook University.....Stony Brook, NY  
 Syracuse University.....Syracuse, NY  
 Tennessee, Knoxville, University of.....Knoxville, TN  
 Texas A&M University.....College Station, TX  
 Texas Christian University.....Fort Worth, TX  
 Texas, University of.....Austin, TX  
 Toledo, University of.....Toledo, OH  
 Towson University.....Towson, MD  
 Tulane University.....New Orleans, LA  
 U.S. Air Force Academy.....USAF Academy, CO  
 U.S. Military Academy (Army).....West Point, NY  
 U.S. Naval Academy (Navy).....Annapolis, MD  
 Utah, University of.....Salt Lake City, UT  
 Valparaiso University.....Valparaiso, IN  
 Vanderbilt University.....Nashville, TN  
 Vermont, University of.....Burlington, VT  
 Villanova University.....Villanova, PA  
 Virginia Military Institute.....Lexington, VA  
 Virginia Polytechnic Institute (Va Tech)..Blacksburg, VA  
 Virginia, University of.....Charlottesville, VA  
 Wagner College.....Staten Island, NY  
 Washington State University.....Pullman, WA  
 Washington, University of.....Seattle, WA  
 West Virginia University.....Morgantown, WV  
 Western Illinois University.....Macomb, IL  
 Western Kentucky University.....Bowling Green, KY  
 William and Mary, College of.....Williamsburg, VA  
 Wisconsin-Green Bay, University of.....Green Bay, WI  
 Wisconsin-Madison, University of.....Madison, WI  
 Wisconsin-Milwaukee, University of.....Milwaukee, WI  
 Wright State University.....Dayton, OH  
 Wyoming, University of.....Laramie, WY  
 Xavier University.....Cincinnati, OH  
 Yale University.....New Haven, CT  
 Youngstown State University.....Youngstown, OH

### Division II

Adams State University.....Alamosa, CO

Adelphi University ..... Garden City, NY  
 Alaska-Fairbanks, University of ..... Fairbanks, AK  
 Ashland University ..... Ashland, OH  
 Assumption College ..... Worcester, MA  
 Bentley College ..... Waltham, MA  
 Bloomsburg University ..... Bloomsburg, PA  
 Bridgeport, University of ..... Bridgeport, CT  
 Bryant University ..... Smithfield, RI  
 C.W. Post University ..... Long Island, NY  
 California (PA) University ..... California, PA  
 California-San Diego, University of ..... La Jolla, CA  
 Catawba College ..... Salisbury, NC  
 Central Washington University ..... Ellensburg, WA  
 Charleston (WV), University of ..... Charleston, WV  
 Clarion University of Pennsylvania ..... Clarion, PA  
 Colorado School of Mines ..... Golden, CO  
 Davis and Elkins College ..... Elkins, WV  
 Delta State University ..... Cleveland, MS  
 Drury University ..... Springfield, MO  
 East Stroudsburg University ..... East Stroudsburg, PA  
 Edinboro University ..... Edinboro, PA  
 Fairmont State College ..... Fairmont, WV  
 Findlay, University of ..... Findlay, OH  
 Florida Southern College ..... Lakeland, FL  
 Gannon University ..... Erie, PA  
 Grand Canyon University ..... Phoenix, AZ  
 Grand Valley State University ..... Allendale, MI  
 Henderson State University ..... Arkadelphia, AR  
 Hillsdale College ..... Hillsdale, MI  
 Incarnate Word, University of ..... San Antonio, TX  
 Indiana University of Pennsylvania ..... Indiana, PA  
 Indianapolis, University of ..... Indianapolis, IN  
 Kutztown University of Pennsylvania ..... Kutztown, PA  
 Le Moyne College ..... Syracuse, NY  
 Lenoir-Rhyne College ..... Hickory, NC  
 Lewis University ..... Romeoville, IL  
 Limestone College ..... Gaffney, SC  
 Lock Haven University of Pennsylvania ..... Lock Haven, PA  
 Mansfield University of Pennsylvania ..... Mansfield, PA  
 Mars Hill College ..... Mars Hill, NC  
 Mesa State College ..... Grand Junction, CO  
 Metropolitan State College of Denver ..... Denver, CO  
 Millersville University of Pennsylvania ..... Millersville, PA  
 Minnesota State University (Mankato) ..... Mankato, MN  
 Minnesota State University Moorhead ..... Moorhead, MN  
 Missouri University of Science & Technology ..... Rolla, MO  
 Nebraska at Kearney, University of ..... Kearney, NE  
 Nebraska, Omaha, University of ..... Omaha, NE  
 Northern Michigan University ..... Marquette, MI  
 Northern State University ..... Aberdeen, SD  
 Nova Southeastern University ..... Fort Lauderdale, FL  
 Ouachita Baptist University ..... Arkadelphia, AR  
 Pace University ..... Pleasantville, NY  
 Pfeiffer University ..... Misenheimer, NC  
 Pittsburgh-Bradford, University of ..... Bradford, PA  
 Post University ..... Waterbury, CT  
 Queens College (New York) ..... Flushing, NY  
 Rollins College ..... Winter Park, FL  
 Saint Andrew's Presbyterian College ..... Laurinburg, NC  
 Saint Cloud State University ..... St. Cloud, MN  
 Saint Leo University ..... Saint Leo, FL  
 Saint Michaels College ..... Colchester, VT  
 Saint Rose, The College of ..... Albany, NY  
 Salem International University ..... Salem, WV  
 San Francisco State University ..... San Francisco, CA  
 Seattle University ..... Seattle, WA  
 Shippensburg University ..... Shippensburg, PA  
 Slippery Rock University ..... Slippery Rock, PA  
 South Dakota, University of ..... Vermillion, SD  
 Southern Arkansas University ..... Magnolia, AR  
 Southern Connecticut State University ..... New Haven, CT  
 Tampa, University of ..... Tampa, FL  
 Texas-Permian Basin ..... Odessa, TX  
 Truman State University ..... Kirksville, MO  
 Wayne State University (MI) ..... Detroit, MI  
 West Chester University ..... West Chester, PA

West Virginia Wesleyan College ..... Buckhannon, WV  
 Wheeling Jesuit University ..... Wheeling, WV  
 Wingate University ..... Wingate, NC

**Division III**

Agnes Scott College ..... Atlanta/Decatur, GA  
 Albion College ..... Albion, MI  
 Albright College ..... Reading, PA  
 Alfred University ..... Alfred, NY  
 Allegheny College ..... Meadville, PA  
 Alma College ..... Alma, MI  
 Amherst College ..... Amherst, MA  
 Arcadia College ..... Glenside, PA  
 Augsburg College ..... Minneapolis, MN  
 Augustana College (Illinois) ..... Rock Island, IL  
 Austin College ..... Sherman, TX  
 Babson College ..... Babson Park, MA  
 Baldwin-Wallace College ..... Berea, OH  
 Baruch College ..... New York, NY  
 Bates College ..... Lewiston, ME  
 Beloit College ..... Beloit, WI  
 Benedictine University (Illinois) ..... Lisle, IL  
 Bethany College (West Virginia) ..... Bethany, WV  
 Bowdoin College ..... Brunswick, ME  
 Brandeis University ..... Waltham, MA  
 Bridgewater College ..... Harrisonburg, VA  
 Bridgewater State College ..... Bridgewater, MA  
 Brooklyn College ..... Brooklyn, NY  
 Bryn Mawr College ..... Bryn Mawr, PA  
 Buffalo State College ..... Buffalo, NY  
 California Institute of Technology ..... Pasadena, CA  
 California Lutheran University ..... Thousand Oaks, CA  
 California-Santa Cruz, University of ..... Santa Cruz, CA  
 Calvin College ..... Grand Rapids, MI  
 Carleton College ..... Northfield, MN  
 Carnegie Mellon University ..... Pittsburgh, PA  
 Carroll College (Wisconsin) ..... Waukesha, WI  
 Carthage College ..... Kenosha, WI  
 Case Western Reserve University ..... Cleveland, OH  
 Catholic University ..... Washington, DC  
 Cazenovia College ..... Cazenovia, NY  
 Centre College ..... Danville, KY  
 Chapman University ..... Orange, CA  
 Chatham University ..... Pittsburgh, PA  
 Chicago, University of ..... Chicago, IL  
 Claremont McKenna- Mudd-Scripps ..... Claremont, CA  
 Clark University (Massachusetts) ..... Worcester, MA  
 Clarkson University ..... Potsdam, NY  
 Coe College ..... Cedar Rapids, IA  
 Colby College ..... Waterville, ME  
 Colby-Sawyer College ..... New London, NH  
 Colorado College ..... Colorado Springs, CO  
 Concordia College-Moorhead ..... Moorhead, MN  
 Connecticut College ..... New London, CT  
 De Pauw University ..... Greencastle, IN  
 Denison University ..... Granville, OH  
 Dickinson College ..... Carlisle, PA  
 Drew University ..... Madison, NJ  
 Eastern Connecticut State University ..... Willimantic, CT  
 Elizabethtown College ..... Elizabethtown, PA  
 Elms College ..... Chicopee, MA  
 Emory and Henry College ..... Emory, VA  
 Emory University ..... Atlanta, GA  
 Eureka College ..... Eureka, IL  
 Fairleigh Dickinson University, Madison ..... Madison, NJ  
 Franklin & Marshall College ..... Lancaster, PA  
 Franklin College ..... Franklin, IN  
 Fredonia State University ..... Fredonia, NY  
 Frostburg State University ..... Frostburg, MA  
 Gallaudet University ..... Washington, DC  
 Gettysburg College ..... Gettysburg, PA  
 Gordon College ..... Wenham, MA  
 Goucher College ..... Towson, MA  
 Greensboro College ..... Greensboro, NC  
 Grinnell College ..... Grinnell, IA  
 Grove City College ..... Grove City, PA

Guilford College ..... Greensboro, NC  
 Gustavus Adolphus College ..... St. Peter, MN  
 Hamilton College ..... Clinton, NY  
 Hamline University ..... St. Paul, MN  
 Hartwick College ..... Oneonta, NY  
 Hendrix College ..... Conway, AR  
 Hiram College ..... Hiram, OH  
 Hobart and William Smith Colleges ..... Geneva, NY  
 Hollins University ..... Hollins University, VA  
 Hood College ..... Frederick, MA  
 Hope College ..... Holland, MI  
 Hunter College ..... New York, NY  
 Illinois College ..... Jacksonville, IL  
 Illinois Wesleyan University ..... Bloomington, IL  
 Ithaca College ..... Ithaca, NY  
 John Carroll University ..... University Heights, OH  
 Johns Hopkins University ..... Baltimore, MD  
 Juniata College ..... Huntingdon, PA  
 Kalamazoo College ..... Kalamazoo, MI  
 Keene State College ..... Keene, NH  
 Kenyon College ..... Gambier, OH  
 Kings College (Pennsylvania) ..... Wilkes-Barre, PA  
 Knox College ..... Galesburg, IL  
 La Grange College ..... La Grange, GA  
 La Verne, University of ..... La Verne, CA  
 Lake Forest College ..... Lake Forest, IL  
 Lawrence University ..... Appleton, WI  
 Lebanon Valley College ..... Annville, PA  
 Lehman College ..... Bronx, NY  
 Lewis and Clark College ..... Portland, OR  
 Linfield College ..... Mc Minnville, OR  
 Loras College ..... Dubuque, IA  
 Luther College ..... Decorah, IA  
 Lycoming College ..... Williamsport, PA  
 Mac Murray College ..... Jacksonville, IL  
 Macalester College ..... St. Paul, MN  
 Mary Washington College ..... Fredericksburg, VA  
 Marymount University (Virginia) ..... Arlington, VA  
 Massachusetts (Dartmouth), University of ..... North Dartmouth, MA  
 Massachusetts Institute of Technology ..... Cambridge, MA  
 Mc Murry University ..... Abilene, TX  
 McDaniel College ..... Westminster, MD  
 Messiah College ..... Grantham, PA  
 Middlebury College ..... Middlebury, VT  
 Millikin University ..... Decatur, IL  
 Mills College ..... Oakland, CA  
 Minnesota-Morris, University of ..... Morris, MN  
 Misericordia, College of ..... Dallas, PA  
 Monmouth College ..... Monmouth, IL  
 Montclair State University ..... Upper Montclair, NJ  
 Mount Holyoke College ..... South Hadley, MA  
 Mount St. Mary College (New York) ..... Newburgh, NY  
 Mount St. Vincent, College of ..... Riverdale, NY  
 Mount Union College ..... Alliance, OH  
 Nazareth College ..... Rochester, NY  
 New Jersey, The College of ..... Ewing, NJ  
 New Rochelle, College of ..... New Rochelle, NY  
 New York University ..... New York, NY  
 New York, State University (Brockport) ..... Brockport, NY  
 New York, State University (Cortland) ..... Cortland, NY  
 New York, State University (Geneseo) ..... Geneseo, NY  
 New York, State University (Maritime)Throggs Neck, NY  
 New York, State University (New Paltz) .. New Paltz, NY  
 New York, State University (Old Westbury) ..... Old Westbury, NY  
 New York, State University (Oswego) ..... Oswego, NY  
 New York, State University (Potsdam) ..... Potsdam, NY  
 North Central College ..... Naperville, IL  
 Norwich University ..... Northfield, VT  
 Notre Dame (Maryland), College of ..... Baltimore, MD  
 Oberlin College ..... Oberlin, OH  
 Occidental College ..... Los Angeles, CA  
 Ohio Northern University ..... Ada, OH  
 Ohio Wesleyan University ..... Delaware, OH  
 Olivet College ..... Olivet, MI

Oneonta State University ..... Oneonta, NY  
Pacific Lutheran University ..... Tacoma, WA  
Pacific University ..... Forest Grove, OR  
Penn State Behrend College ..... Erie, PA  
Pennsylvania State University, Altoona ..... Altoona, PA  
Plymouth State College ..... Plymouth, NH  
Pomona-Pitzer Colleges ..... Claremont, CA  
Principia College ..... Elsie, IL  
Puget Sound, University of ..... Tacoma, WA  
Ramapo College of New Jersey ..... Mahwah, NJ  
Randolph College ..... Lynchburg, VA  
Randolph-Macon College ..... Ashland, VA  
Redlands, University of ..... Redlands, CA  
Regis College (Massachusetts) ..... Weston, MA  
Rensselaer Polytechnic Institute ..... Troy, NY  
Rhodes College ..... Memphis, TN  
Ripon College ..... Ripon, WI  
Rochester Institute of Technology ..... Rochester, NY  
Rochester, University of ..... Rochester, NY  
Roger Williams University ..... Bristol, RI  
Rose-Hulman Institute of Technology ..... Terre Haute, IN  
Rowan University ..... Glassboro, NY  
Saint Benedict, College of ..... St. Joseph, MN  
Saint Catherine, College of ..... St. Paul, MN  
Saint Elizabeth, College of ..... Morristown, NJ  
Saint Johns University (Minnesota) ..... Collegeville, MN  
Saint Joseph College (Connecticut) ..... West Hartford, CT  
Saint Joseph's College ..... Brooklyn, NY  
Saint Joseph's College (Maine) ..... Standish, ME  
Saint Lawrence University ..... Canton, NY  
Saint Marys College (Indiana) ..... Notre Dame, IN  
Saint Marys College of Maryland ..... St. Marys City, MD  
Saint Marys University of Minnesota ..... Winona, MN  
Saint Norbert College ..... DePere, WI  
Saint Olaf College ..... Northfield, MN  
Saint Thomas, University of ..... St. Paul, MN  
Salem College ..... Winston-Salem, NC  
Salem State College ..... Salem, MA  
Salisbury State University ..... Salisbury, MA  
Scranton, University of ..... Scranton, PA  
Simmons College ..... Boston, MA  
Simpson College ..... Indianola, IA  
Skidmore College ..... Saratoga Springs, NY  
Smith College ..... Northampton, MA  
South, University of the (Sewanee) ..... Sewanee, TN  
Southwestern University (Texas) ..... Georgetown, TX  
Springfield College ..... Springfield, MA  
Staten Island, College of ..... Staten Island, NY  
Stevens Institute of Technology ..... Hoboken, NJ  
Susquehanna University ..... Selingsgrove, PA  
Swarthmore College ..... Swarthmore, PA  
Sweet Briar College ..... Sweet Briar, VA  
Transylvania University ..... Lexington, KY  
Trinity College (Connecticut) ..... Hartford, CT  
Trinity University (Texas) ..... San Antonio, TX  
Tufts University ..... Medford, MA  
U.S. Coast Guard Academy ..... New London, CT  
U.S. Merchant Marine Academy ..... Kings Point, NY  
Union College (New York) ..... Schenectady, NY  
Ursinus College ..... Collegeville, PA  
Utica ..... Utica, NY  
Vassar College ..... Poughkeepsie, NY  
Wabash College ..... Crawfordsville, IN  
Washington & Jefferson College ..... Washington, PA  
Washington and Lee University ..... Lexington, VA  
Washington College (Maryland) ..... Chestertown, MD  
Washington University (Missouri) ..... St. Louis, MO  
Webster University ..... Webster Groves, MO  
Wellesley College ..... Wellesley, MA  
Wells College ..... Aurora, NY  
Wesleyan University ..... Middletown, CT  
Western Connecticut State University ..... Danbury, CT  
Western New England College ..... Springfield, MA  
Westfield State College ..... Westfield, MA  
Westminster College ..... New Wilmington, PA  
Wheaton College (Illinois) ..... Wheaton, IL

Wheaton College (Massachusetts) ..... Norton, MA  
Wheelock College ..... Boston, MA  
Whitman College ..... Walla Walla, WA  
Whittier College ..... Whittier, CA  
Whitworth College ..... Spokane, WA  
Widener University ..... Chester, PA  
Willamette University ..... Salem, OR  
William Paterson University of New Jersey ..... Wayne, NJ  
Williams College ..... Williamstown, MA  
Wilmington College (Ohio) ..... Wilmington, OH  
Wisconsin-Eau Claire, University of ..... Eau Claire, WI  
Wisconsin-La Crosse, University of ..... La Crosse, WI  
Wisconsin-Oshkosh, University of ..... Oshkosh, WI  
Wisconsin-River Falls, University of ..... River Falls, WI  
Wisconsin-Stevens Point, University of ..... Stevens Point, WI  
Wisconsin-Whitewater, University of ..... Whitewater, WI  
Wittenberg University ..... Springfield, OH  
Wooster, College of ..... Wooster, OH  
Worcester Polytechnic Institute ..... Worcester, MA  
York College (Pennsylvania) ..... York, PA

**NAIA**

Albertson College ..... Caldwell, ID  
Asbury College ..... Wilmore, KY  
Azusa Pacific University ..... Azusa, CA  
Berry College ..... Mounty Berry, GA  
Biola University ..... LaMiranda, CA  
Brenau University ..... Gainesville, GA  
California Baptist University ..... Riverside, CA  
California State University East Bay ..... Hayward, CA  
Campbellsville University ..... Campbellsville, KY  
College of St. Mary ..... Omaha, NE  
Concordia University ..... Irvine, CA  
Cumberlands, University of the ..... Williamsburg, KY  
Dartmouth College ..... Albany, GA  
Fresno Pacific University ..... Fresno, CA  
Hannibal-LaGrange College ..... Hannibal, MO  
Hastings College ..... Hastings, NE  
Illinois Institute of Technology ..... Chicago, IL  
King College (Kentucky) ..... Bristol, TN  
Lambuth University ..... Jackson, TN  
Lindenwood University ..... Saint Charles, MO  
Lindsey Wilson College ..... Columbia, KY  
Malone University ..... Canton, OH  
Milligan College ..... Milligan College, TN  
Morningside College ..... Sioux City, IA  
Notre Dame (Ohio) College ..... South Euclid, OH  
Robert Morris College ..... Chicago, IL  
Savannah College of Art and Design ..... Savannah, GA  
Simon Fraser University ..... Burnaby, ON - CANADA, AK  
Soka University ..... Aliso Viejo, CA  
Union College (Kentucky) ..... Barbourville, KY  
Urbana University ..... Urbana, OH  
Ursuline Academy ..... Pike, OH  
Vincennes University ..... Vincennes, IN  
Virgin Islands ..... VI

**JUNIOR COLLEGES**

Alfred State University ..... Alfred, NY  
American River College ..... Sacramento, CA  
Bakersfield College ..... Bakersfield, CA  
Borough of Manhattan Community College ..... New York, NY  
Cabrillo College ..... Aptos, CA  
Cerritos College ..... Norwalk, CA  
Chabot College ..... Pleasanton, CA  
Chaffey College ..... Rancho Cucamonga, CA  
Citrus College ..... Glendora, CA  
College of DuPage ..... Glen Elyn, IL  
College of Marin ..... Kentfield, CA  
College of the Canyons ..... Santa Clarita, CA  
College of the Sequoias ..... Visalia, CA  
Cuesta College ..... San Luis Obispo, CA  
Cypress College ..... Cypress, CA  
Daytona State College ..... Daytona, FL  
DeAnza College ..... Cupertino, CA  
Diablo Valley College ..... Pleasant Hill, CA  
El Camino College ..... Torrance, CA  
Erie Community College ..... Buffalo, NY  
Fashion Institute of Technology ..... New York, NY  
Foothill College ..... Los Altos Hills, CA  
Fullerton College ..... Fullerton, CA  
Genesee Community College ..... Batavia, NY  
Golden West College ..... Huntington Beach, CA  
Gordon College ..... Barnesville, GA  
Grossmont College ..... El Cajon, CA  
Herkimer County Community College ..... Herkimer, NY  
Indian River State College ..... Ft. Pierce, FL  
Iowa Central Community College ..... Fort Dodge, IA  
Jamestown Community College ..... Jamestown, NY  
Laney College ..... Oakland, CA  
Lincoln College ..... Lincoln, IL  
Long Beach City College ..... Long Beach, CA  
Los Angeles Trade-Technical College ..... Los Angeles, CA  
Los Angeles Valley College ..... Valley Glen, CA  
Merced College ..... Merced, CA  
Modesto Junior College ..... Modesto, CA  
Monroe Community College ..... Rochester, NY  
Mt. San Antonio ..... Walnut, CA  
New York, State University (Delhi) ..... Delhi, NY  
Ocean County College ..... Toms River, NJ  
Ohlone College ..... Fremont, CA  
Orange Coast College ..... Costa Mesa, CA  
Palomar College ..... San Marcos, CA  
Pasadena City College ..... Pasadena, CA  
Pierce College ..... Woodland Hills, CA  
Queensborough Community College ..... Bayside, NY  
Riverside Community College ..... Riverside, CA  
Sacramento City College ..... Sacramento, CA  
Saddleback College ..... Mission Viejo, CA  
San Diego Mesa College ..... San Diego, CA  
San Joaquin Delta College ..... Stockton, CA  
Santa Ana College ..... Santa Ana, CA  
Santa Monica College ..... Santa Monica, CA  
Santa Rosa Junior College ..... Santa Rosa, CA  
Shasta College ..... Redding, CA  
Sierra College ..... Rocklin, CA  
Solano Community College ..... Fairfield, CA  
Ventura College ..... Ventura, CA  
West Valley College ..... Saratoga, CA

# Conference Affiliations

As of August 1, 2009

## Allegheny Mountain Collegiate Conference

Division II, III – M & W  
Frostburg State University  
Penn State Behrend College  
Pennsylvania State University, Altoona  
Pittsburgh-Bradford, University of

## America East Conference

Division I, MM – M & W  
Binghamton University  
Boston University  
Maine, University of  
Maryland-Baltimore County, University of  
New Hampshire, University of  
Stony Brook University  
Vermont, University of

## Atlantic 10 Conference

Division I, MM – M & W  
Duquesne University  
Fordham University  
George Washington University  
La Salle University  
Massachusetts (Amherst), University of  
Rhode Island, University of  
Richmond, University of  
Saint Bonaventure University  
Saint Louis University  
Xavier University

## Atlantic Coast Conference

Division I – M & W  
Boston College  
Clemson University  
Duke University  
Florida State University  
Georgia Institute of Technology  
Maryland, College Park, University of  
Miami (Florida), University of  
North Carolina State University  
North Carolina, Chapel Hill, University of  
Virginia Polytechnic Institute  
Virginia, University of

## Big East Conference

Division I – M & W  
Cincinnati, University of  
Connecticut, University of  
Georgetown University  
Louisville, University of  
Notre Dame, University of  
Pittsburgh, University of  
Providence College  
Rutgers, State Univ of New Jersey  
Seton Hall University  
Syracuse University  
Villanova University  
West Virginia University

## Big Ten Conference

Division I – M & W  
Illinois-Champaign, University of  
Indiana University-Bloomington  
Iowa, University of  
Michigan State University  
Michigan, University of  
Minnesota, Twin Cities, University of  
Northwestern University  
Ohio State University  
Wisconsin-Madison, University of

## Big XII Conference

Division I – M & W  
Iowa State University  
Kansas, University of  
Missouri, University of  
Nebraska, Lincoln, University of  
Texas A&M University  
Texas, University of

## Big West Conference

Division I, MM – M & W  
California Polytechnic State University  
California State University, Northridge  
California-Davis, University of  
California-Irvine, University of  
California-Santa Barbara, University of  
Idaho, University of  
Pacific (California), University of

## Bluegrass Mountain Conference

Division II, III, NAIA – M & W  
Catawba College  
Davis and Elkins College  
Fairmont State College  
Florida Southern College  
Johns Hopkins University  
Limestone College  
Rollins College  
Saint Leo University  
Salem State College  
Savannah College of Art and Design  
Tampa, University of  
Transylvania University  
Washington and Lee University  
West Virginia Wesleyan College  
Wheeling Jesuit University  
Wingate University

## Capital Athletic Conference

Division III – M & W  
Gallaudet University  
Mary Washington College  
Marymount University (Virginia)  
Saint Marys College of Maryland  
Salisbury State University  
York College (Pennsylvania)

## Centennial Conference

Division III – M & W  
Dickinson College  
Franklin & Marshall College  
Gettysburg College  
McDaniel College  
Swarthmore College  
Ursinus College  
Washington College (Maryland)

## Coastal Collegiate Swimming Association

Division I, MM – M & W  
Campbell University  
Charleston (SC), College of  
Davidson College  
Florida A&M University  
Florida Gulf Coast University  
Gardner-Webb University  
Georgia Southern University  
Howard University  
North Carolina A&T State University  
North Florida, University of  
Radford University  
Virginia Military Institute

## Collegiate Conf of Illinois & Wisconsin

Division III – M & W  
Augustana College  
Carthage College  
Illinois Wesleyan University  
Millikin University  
North Central College  
Rose-Hulman Institute of Technology  
Wheaton College (Illinois)

## Colonial Athletic Association

Division I, MM – M & W  
Delaware, University of  
Drexel University  
George Mason University  
James Madison University  
North Carolina, Wilmington, University of  
Northeastern University  
Old Dominion University  
Towson University  
William and Mary, College of

## Conference USA

Division I – MM – M & W  
East Carolina University  
Hawaii, Manoa, University of  
Houston, University of  
Marshall University  
North Dakota, University of  
Northern Colorado, University of  
Rice University  
Southern Methodist University  
Tulane University

## Great Lakes Intercollegiate Athletic Conf.

Division II – M & W  
Ashland University  
Findlay, University of  
Grand Valley State University  
Hillsdale College  
Indianapolis, University of  
Lewis University  
Northern Michigan University  
Wayne State University (MI)

## Horizon League

Division I, MM – M & W

Butler University  
Cleveland State University  
Illinois at Chicago, University of  
Valparaiso University  
Wisconsin-Green Bay, University of  
Wisconsin-Milwaukee, University of  
Wright State University  
Youngstown State University

## Ivy League

Division I, MM – M & W  
Brown University  
Columbia University  
Cornell University  
Dartmouth College  
Harvard University  
Pennsylvania, University of  
Princeton University  
Yale University

## Landmark Conference

Division III – M & W  
Catholic University  
Drew University  
Fairleigh Dickinson University, Madison  
Goucher College  
Juniata College  
Nazareth College  
Scranton, University of  
Susquehanna University  
U.S. Merchant Marine Academy

## Liberal Arts

Division II, III, NAIA – M & W  
Coe College  
Eureka College  
Lindenwood University  
Loras College  
Luther College  
McMurray University  
Minnesota-Morris, University of  
Morningside College  
Principia College  
Simpson College

## Metropolitan Conference

Division I, II, III – M & W  
Adelphi University  
Bridgeport, University of  
C.W. Post University  
Hunter College  
Lehman College  
Mount St. Mary College (New York)  
New Jersey Institute of Technology  
New Jersey, The College of  
New York, State University (Maritime)  
Queens College (New York)  
Ramapo College of New Jersey  
Rowan University  
Saint Francis College (New York)  
Saint Joseph's College (Maine)  
Saint Rose, The College of  
Southern Connecticut State University  
Staten Island, College of  
U.S. Merchant Marine Academy  
William Paterson University of NJ

## Metro Atlantic Athletic Conference

Division I, MM – M & W  
Canisius College  
Fairfield University

Iona College  
Loyola College (Maryland)  
Manhattan College  
Marist College  
Niagara University  
Rider University  
Saint Elizabeth, College of  
Saint Peters College  
Siena College

Mid-American Conference

Division I, MM – M & W  
Akron, University of (Women)  
Ball State University  
Bowling Green State University (Women)  
Buffalo, University at  
Eastern Michigan University  
Evansville, University of (Men)  
Miami University (Ohio)  
Missouri State University (Men)  
Ohio University (Women)  
Southern Illinois University (Men)  
Toledo, University of (Women)

Middle Atlantic States

Division III – M & W  
Albright College  
Arcadia College  
Elizabethtown College  
Fairleigh Dickinson University, Madison  
Kings College (Pennsylvania)  
Lebanon Valley College  
Lycoming College  
Messiah College  
Misericordia, College of  
Widener University

Michigan Intercollegiate Athletic Assn

Division III – M & W  
Albion College  
Alma College  
Calvin College  
Hope College  
Kalamazoo College  
Olivet College  
Saint Marys College (Indiana)

Midwest Conference

Division III – M & W  
Beloit College  
Carroll College (WI)  
Grinnell College  
Illinois College  
Knox College  
Lake Forest College  
Lawrence University  
Monmouth College  
Ripon College  
Saint Norbert College

Minnesota Intercollegiate Athletic Conf

Division III – M & W  
Carleton College  
Concordia College-Moorhead  
Gustavus Adolphus College  
Hamline University  
Macalester College  
Saint Benedict, College of  
Saint Catherine, College of  
Saint Johns University (Minnesota)  
Saint Marys University of Minnesota  
Saint Olaf College  
Saint Thomas, University of

Missouri Valley Conference

Division I, MM – W  
Evansville, University of  
Illinois State University  
Missouri State University  
Northern Iowa, University of  
Southern Illinois University

Mountain West Conference

Division I – MM – M & W  
Brigham Young University  
Colorado State University  
Nevada, Las Vegas, University of  
New Mexico, University of  
San Diego State University  
Texas Christian University  
U.S. Air Force Academy  
Utah, University of  
Wyoming, University of

New England Small College Athletic Conf

Division III – M & W  
Amherst College  
Bates College  
Bowdoin College  
Colby College  
Connecticut College  
Middlebury College  
Trinity College (Connecticut)  
Tufts University  
Wesleyan University  
Williams College

New England Women's & Men's Athletic Conf

Division III – M & W  
Babson College  
Clark University  
Massachusetts Institute of Technology  
Smith College  
Springfield College  
U.S. Coast Guard Academy  
Wellesley College  
Wheaton College (Massachusetts)  
Worcester Polytechnic Institute

New South Intercollegiate Swim Conf

Division II – M & W  
Delta State University  
Drury University  
Henderson State University  
Missouri University of Science & Tech  
Ouachita Baptist University  
Truman State University

North Coast Athletic Conference

Division III – M & W  
Allegheny College  
Benison University  
Hiram College  
Kenyon College  
Oberlin College  
Ohio Wesleyan University  
Wabash College  
Wittenberg University  
Wooster, College of

Northeast Conference

Division I,II, MM – W  
Assumption College  
Bentley College  
Central Connecticut State University  
Le Moyne College  
Mount Saint Mary's University  
Sacred Heart University  
Saint Francis University (Pennsylvania)  
Wagner College

Northwest Conference

Division III – M & W  
Lewis and Clark College  
Linfield College  
Puget Sound, University of  
Whitman College  
Whitworth College

Northern Sun Intercollegiate Conference

Division II – M & W  
Minnesota State University (Mankato)  
Minnesota State University Moorhead  
Nebraska, Omaha, University of  
Northern State University  
Saint Cloud State University  
South Dakota, University of

Ohio Athletic Conference

Division III – M & W  
Baldwin-Wallace College  
John Carroll University  
Mount Union College  
Ohio Northern University  
Wilmington College (Ohio)

Old Dominion Athletic Conference

Division III – W  
Emory and Henry College  
Guilford College  
Hollins University  
Notre Dame (Maryland), College of  
Randolph-Macon College  
Salem College  
Sweet Briar College  
Washington and Lee University

Presidents Athletic Conference

Division III – M & W  
Chatham University  
Grove City College  
Mount St. Vincent, College of  
Washington & Jefferson College  
Westminster College

Pacific Collegiate Swim Conference

Division I, II, III, MM, NAIA – M & W  
Alaska-Fairbanks, University of  
Azusa Pacific University  
Biola University  
California Baptist University  
California State University East Bay  
California State University, Bakersfield  
California-San Diego, University of  
California-Santa Cruz, University of  
Chapman University  
Fresno Pacific University  
Loyola Marymount University  
Pepperdine University  
Seattle University  
Soka University

Pacific-10 Conference

Division I – M & W  
Arizona State University  
Arizona, University of  
California-Berkeley, University of  
California-Los Angeles, University of  
Oregon State University  
Southern California-University of  
Stanford University  
Washington State University

Patriot League

Division I, MM – M & W  
American University  
Bucknell University  
Colgate University  
Holy Cross, College of the  
Lafayette College  
Lehigh University  
U.S. Military Academy (Army)  
U.S. Naval Academy (Navy)

Pennsylvania State Athletic Conference

Division II – M & W  
Bloomsburg University of Pennsylvania  
California (PA) University  
Clarion University of Pennsylvania  
East Stroudsburg University of Penns  
Edinboro University of Pennsylvania  
Gannon University  
Indiana University of Pennsylvania  
Kutztown University of Pennsylvania  
Lock Haven University of Pennsylvania  
Millersville University of Pennsylvania  
Shippensburg University of Pennsylvania  
Slippery Rock University of Pennsylvania  
West Chester University of Pennsylvania

Rocky Mountain Athletic Conference

Division II – M & W  
Colorado School of Mines  
Grand Canyon University  
Incarnate Word, University of  
Mesa State College  
Metropolitan State College of Denver  
Nebraska at Kearney, University of

Southeastern Conference

Division I – M & W

Alabama, University of  
Arkansas-Fayetteville, University of  
Auburn University  
Florida, University of  
Georgia, University of  
Kentucky, University of  
Louisiana State University  
South Carolina-Columbia, University of  
Tennessee, Knoxville, University of  
Vanderbilt University

Southern Calif Intercollegiate Athletic Conf

Division III – M & W

California Lutheran University  
Claremont - Mudd-Scripps Colleges  
La Verne, University of  
Occidental College  
Pomona-Pitzer Colleges  
Redlands, University of  
Whittier College

Southern Collegiate Athletic Conference

Division III – M & W

Austin College  
Centre College  
Colorado College  
De Pauw University  
Hendrix College  
Rhodes College  
South, University of the (Sewanee)  
Southwestern University  
Trinity University (Texas)

State University of New York Athletic Conf

Division III – M & W

Buffalo State College  
Fredonia State University  
New York, State University (Geneseo)  
New York, State University (New Paltz)  
New York, State University (Oswego)  
New York, State University (Potsdam)  
Oneonta State University  
New York, State University (Brockport)  
New York, State University (Cortland)

Summit League

Division I, MM – M & W

Centenary College  
Eastern Illinois University  
Indiana Univ-Purdue Univ at Indianapolis  
Oakland University  
South Dakota State University  
Western Illinois University

Sun Belt Conference

Division I, MM – M & W

Denver, University of  
Florida Atlantic University  
Florida International University  
New Orleans, University of  
North Texas, University of  
Western Kentucky University

Upper New York State Collegiate Swim Association

Division III – M & W

Alfred University  
Cazenovia College  
Hamilton College  
Hartwick College  
Hobart and William Smith Colleges  
Ithaca College  
Rensselaer Polytechnic Institute  
Rochester Institute of Technology  
Saint Lawrence University  
Skidmore College  
Stevens Institute of Technology  
Union College (New York)  
Utica  
Vassar College

University Athletic Association

Division III – M & W

Brandeis University  
Carnegie Mellon University  
Case Western Reserve University  
Chicago, University of  
Emory University  
New York University  
Rochester, University of  
Washington University (Missouri)

Western Athletic Conference

Division I – MM – W

Boise State University  
Fresno State  
Hawaii, Manoa, University of  
Nevada, University of  
New Mexico State University  
Northern Arizona University  
San Diego, University of  
San Jose State University

Wisconsin Intercollegiate Athletic Conf

Division III – M & W

Wisconsin-Eau Claire, University of  
Wisconsin-La Crosse, University of  
Wisconsin-Oshkosh, University of  
Wisconsin-River Falls, University of  
Wisconsin-Stevens Point, University of  
Wisconsin-Whitewater, University of

<sup>1</sup> Conferences designated as Mid-Major

America East  
Big West  
Colonial (CAA)  
Coastal Collegiate Swim Association  
Conference USA (C-USA)  
Horizon League  
Mid-American (MAC)  
Mountain West (MWC)  
Sun Belt (SBC)  
Ivy League  
Mid-Eastern (MEAC)  
Missouri Valley (MVC)  
Metro Atlantic (MAAC)  
Mountain West Conference (MWC)  
Pacific Coast Swim Conference (PCSC)  
Patriot League  
Summit League  
Western Athletic Conference (WAC)

## Staff Contact Information

---

### E-Mail Submissions

News Releases (forwarded to news staff).....	<a href="mailto:news@collegeswimming.com">news@collegeswimming.com</a>
Meet Results (for CL2, SD3, or ZIP Files) .....	<a href="mailto:results@collegeswimming.com">results@collegeswimming.com</a>
Swimmer-of-the-Week Nominations .....	<a href="mailto:ncsw@collegeswimming.com">ncsw@collegeswimming.com</a>
Advertising .....	<a href="http://collegeswimming.torque.sportgenic.com">http://collegeswimming.torque.sportgenic.com</a>

### News Staff Contacts

Chris Harrell .....	<a href="mailto:charrell@collegeswimming.com">charrell@collegeswimming.com</a>
News Director, Lead Division I Coverage	
Curt Cassell .....	<a href="mailto:ccassell@collegeswimming.com">ccassell@collegeswimming.com</a>
News Staff	
Drew Davis .....	<a href="mailto:ddavis@collegeswimming.com">ddavis@collegeswimming.com</a>
News Staff	
Michael Smoose .....	<a href="mailto:msmoose@collegeswimming.com">msmoose@collegeswimming.com</a>
News Staff	
Charlotte Green .....	<a href="mailto:cgreen@collegeswimming.com">cgreen@collegeswimming.com</a>
New Staff, Lead Division III Coverage	
Emily Melina .....	<a href="mailto:emily@collegeswimming.com">emily@collegeswimming.com</a>
Features Writer	
Abby Brethauer.....	<a href="mailto:abby@collegeswimming.com">abby@collegeswimming.com</a>
Columnist	
Mike Shelby .....	<a href="mailto:mike@collegeswimming.com">mike@collegeswimming.com</a>
Columnist	

### Program Coordinators

Heather Croix.....	<a href="mailto:hcroix@collegeswimming.com">hcroix@collegeswimming.com</a>
Coaches' Show Coordinator	
Guy Gniotczynski.....	<a href="mailto:ncsw@collegeswimming.com">ncsw@collegeswimming.com</a>
Swimmer of the Week Coordinator	
Randy Horner.....	<a href="mailto:rhorer@collegeswimming.com">rhorer@collegeswimming.com</a>
Mid-Major Poll Coordinator	
Brad Flood.....	<a href="mailto:bflood@collegeswimming.com">bflood@collegeswimming.com</a>
Division II Poll Coordinator	
Vacant.....	
Division III Poll Coordinator	
Stretch Internet .....	<a href="mailto:stream@stretchinternet.com">stream@stretchinternet.com</a>
CollegeSwimming.tv Coordinator (877-778-7382, ext. 2)	
Ivan Manolov .....	<a href="mailto:webmaster@collegeswimming.com">webmaster@collegeswimming.com</a>
Webmaster (Technical Issues)	
Greg Earhart.....	<a href="mailto:gearhart@collegeswimming.com">gearhart@collegeswimming.com</a>
Owner (262-551-6192)	

